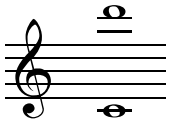


JCB AUDITIONS - SAXOPHONE (ALTO/TENOR/BARITONE)

Technical Requirements

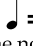
Range:



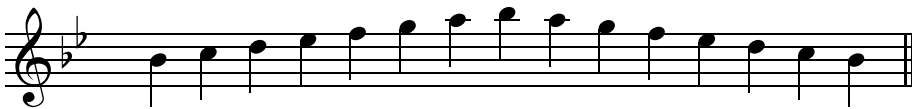
Please be prepared to perform any of the scales on this page, preferably by memory, using any of the following articulation:

- *all slurred
- *all tongued
- *2 slurred, 2 tongued
- *3 slurred, 1 tongued

Minimum Tempo

 = 100
one note per beat

Bb Major - 1 Octave



A Major - 1 Octave



C Major - 2 Octaves



D Harmonic Minor - 1 Octave



D Chromatic - 2 Octaves



2021 Alto/Tenor Saxophone Auditions for JCB in 2022

Please prepare these two pieces to perform at your audition. You do not need to perform by memory. You are permitted to write on this sheet if you would like. Please bring this sheet with you to your audition.

Set Piece 1

Andante $\text{♩} = 80$

f *pp*

7 *f* *p* *rit.*

11 *a tempo* *p* *ff* *pp* *f*

Detailed description: This musical score is for an Alto/Tenor Saxophone. It begins with a tempo marking of 'Andante' and a metronome marking of 80 quarter notes per minute. The key signature has one flat (B-flat major or D minor). The piece starts with a dynamic of *f* (forte) and moves to *pp* (pianissimo) by measure 5. Measure 7 is marked with a *f* dynamic and includes a triplet of eighth notes. The dynamics shift to *p* (piano) by measure 10, followed by a *rit.* (ritardando) marking. At measure 11, the tempo changes to 'a tempo'. The dynamics fluctuate between *p*, *ff* (fortissimo), *pp*, and *f* throughout the piece, which concludes with a final *f* dynamic.

Set Piece 2

Allegro $\text{♩} = 96$

19 *f*

23 *p cresc. poco a poco* *f*

26 *p cresc. poco a poco* *f*

29 *p* *f*

Detailed description: This musical score is for an Alto/Tenor Saxophone. It begins with a tempo marking of 'Allegro' and a metronome marking of 96 quarter notes per minute. The key signature has one sharp (F# major or D minor). The piece starts at measure 19 with a dynamic of *f* (forte). At measure 23, the dynamic is *p* (piano) with the instruction 'cresc. poco a poco' (crescendo poco a poco), leading to a final *f* dynamic at the end of the measure. Measure 26 also starts with *p* and 'cresc. poco a poco', reaching *f* by the end of the measure. Measure 29 begins with *p* and ends with *f*. The piece is characterized by rapid sixteenth-note passages and includes several accents.